

## **Amendments to the Drawings**

The attached sheets of drawings includes changes to Figs. 2-4, 7, 10, 12-14. These drawing sheets replace the original sheets including Fig. 2-4, 7, 10, 12-14.

In Fig. 2, the display window has been labeled "240."

In Fig. 3, the display window has been labeled "302."

In Fig. 4, the display window has been labeled "400."

In Fig. 7, the display window has been labeled "700," the shaft has been labeled "720" the pin has been labeled "722" and the checkmark button label has been changed to read "724."

In Fig. 10, an incorrectly drawn arrow connecting boxes 1002 to 1012 has been fixed.

In Fig. 12, the display window has been labeled 1202, the change has been made to an arrows connected to reference labels 1203 and 1205.

In Fig. 13, the element reference 1302 has been changed to more clearly identify the referenced element.

In Fig. 14, a connecting arrow has been corrected.

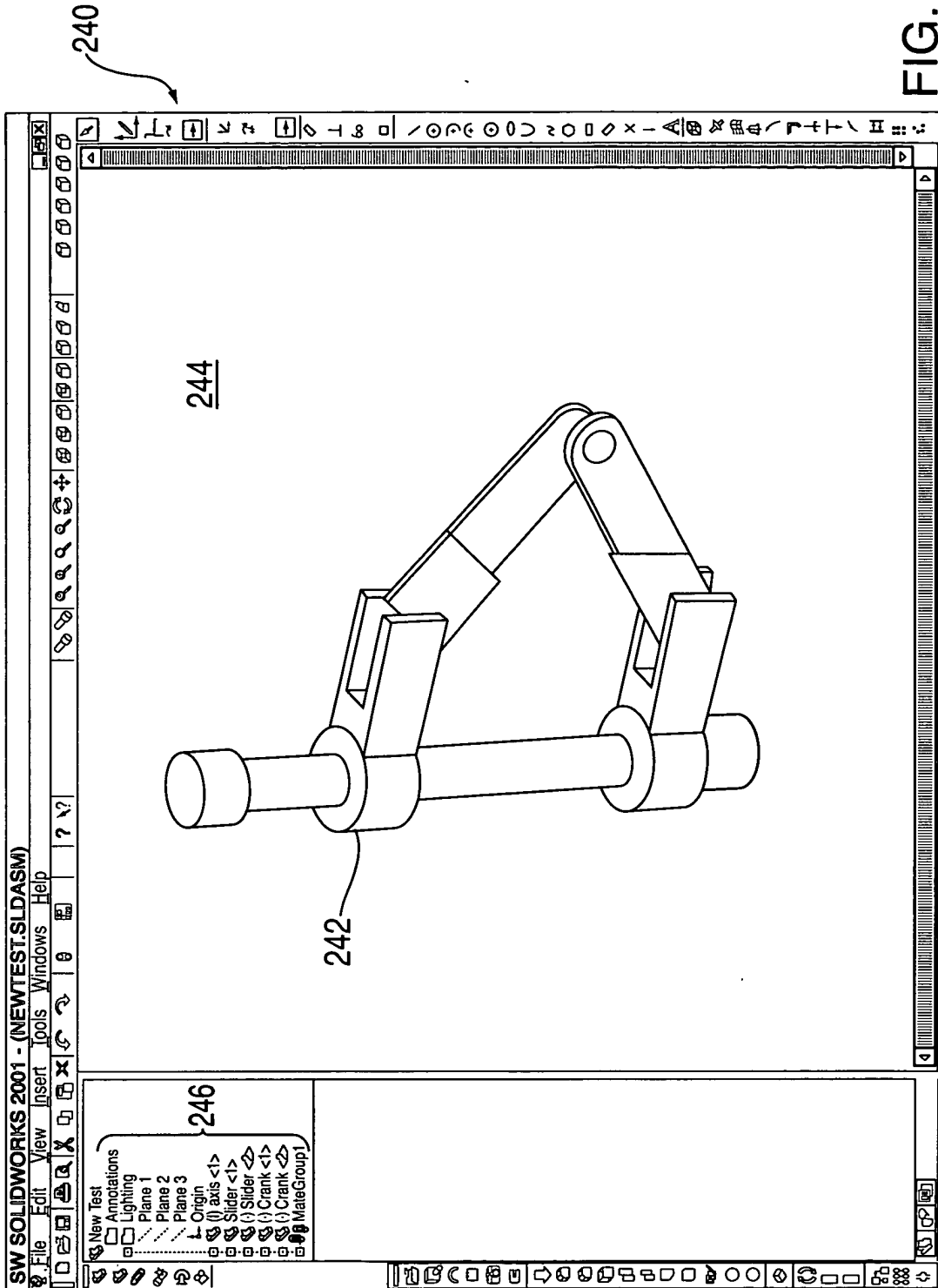
### **Attachment:**

Replacement Sheets showing changes to Figs. 2-4, 7, 10, 12-14.

Annotated Sheets Showing Changes to Figs. 2-4, 7, 10, 12-14.



FIG. 2



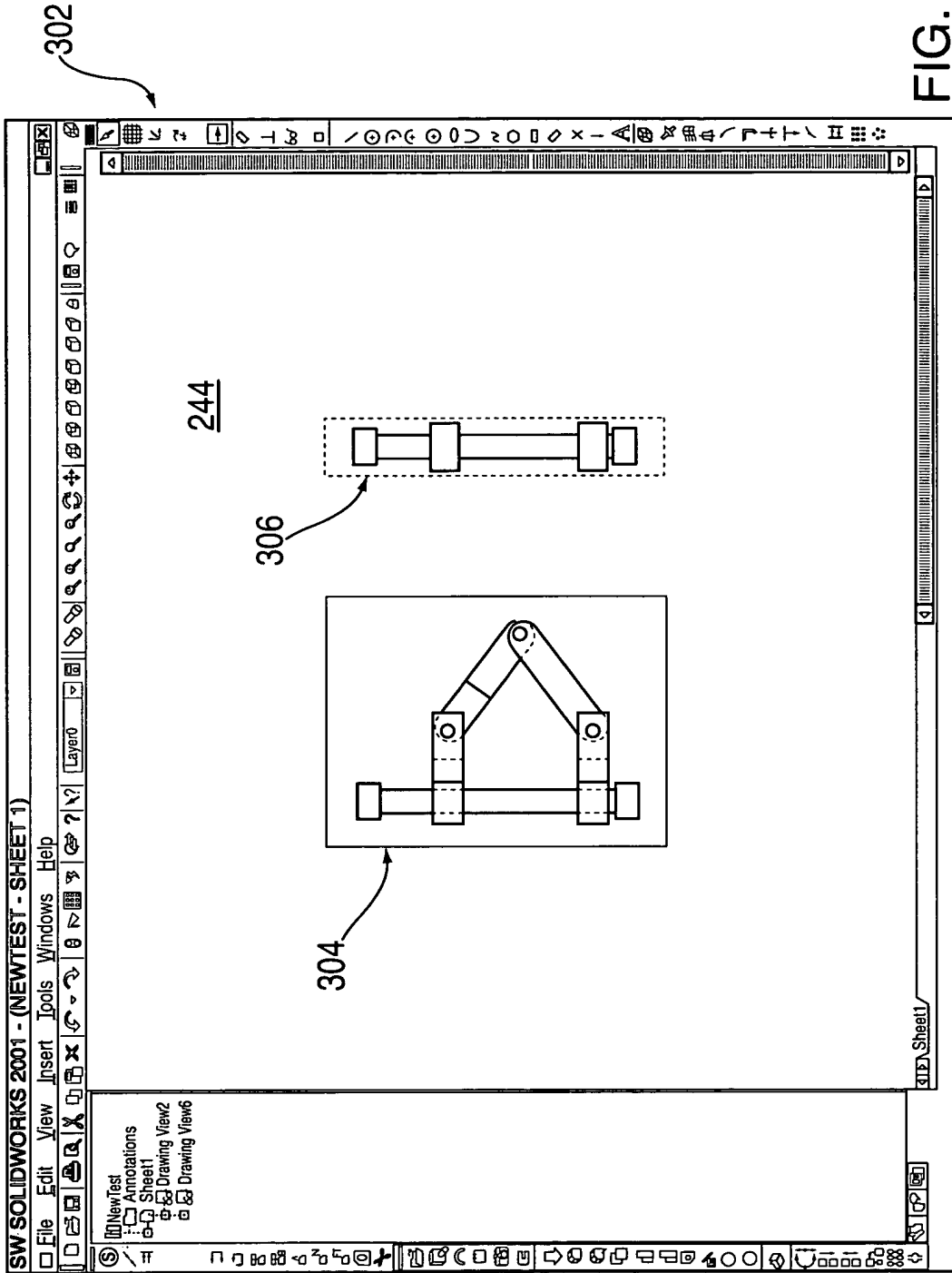


FIG. 3

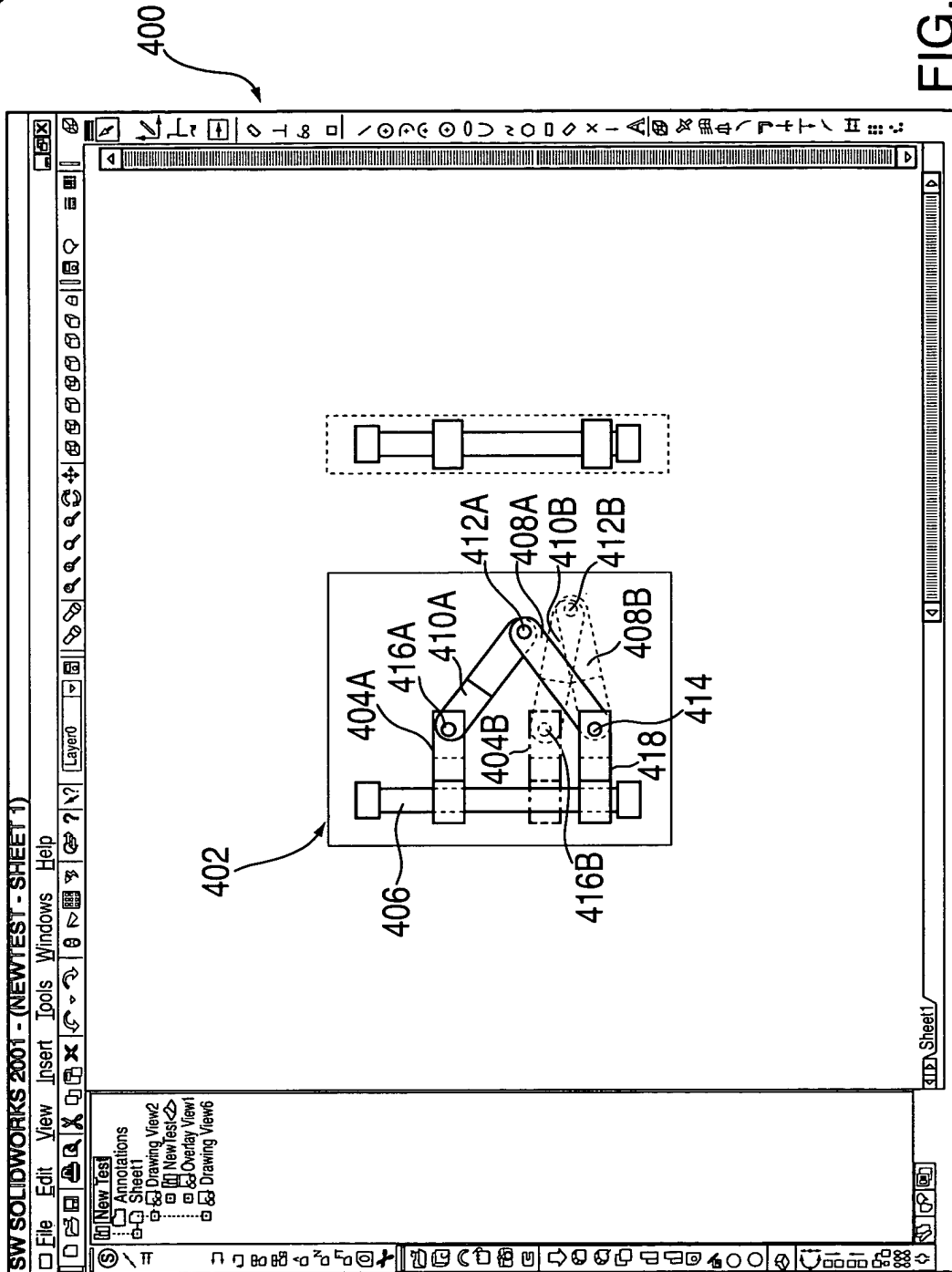


FIG. 4

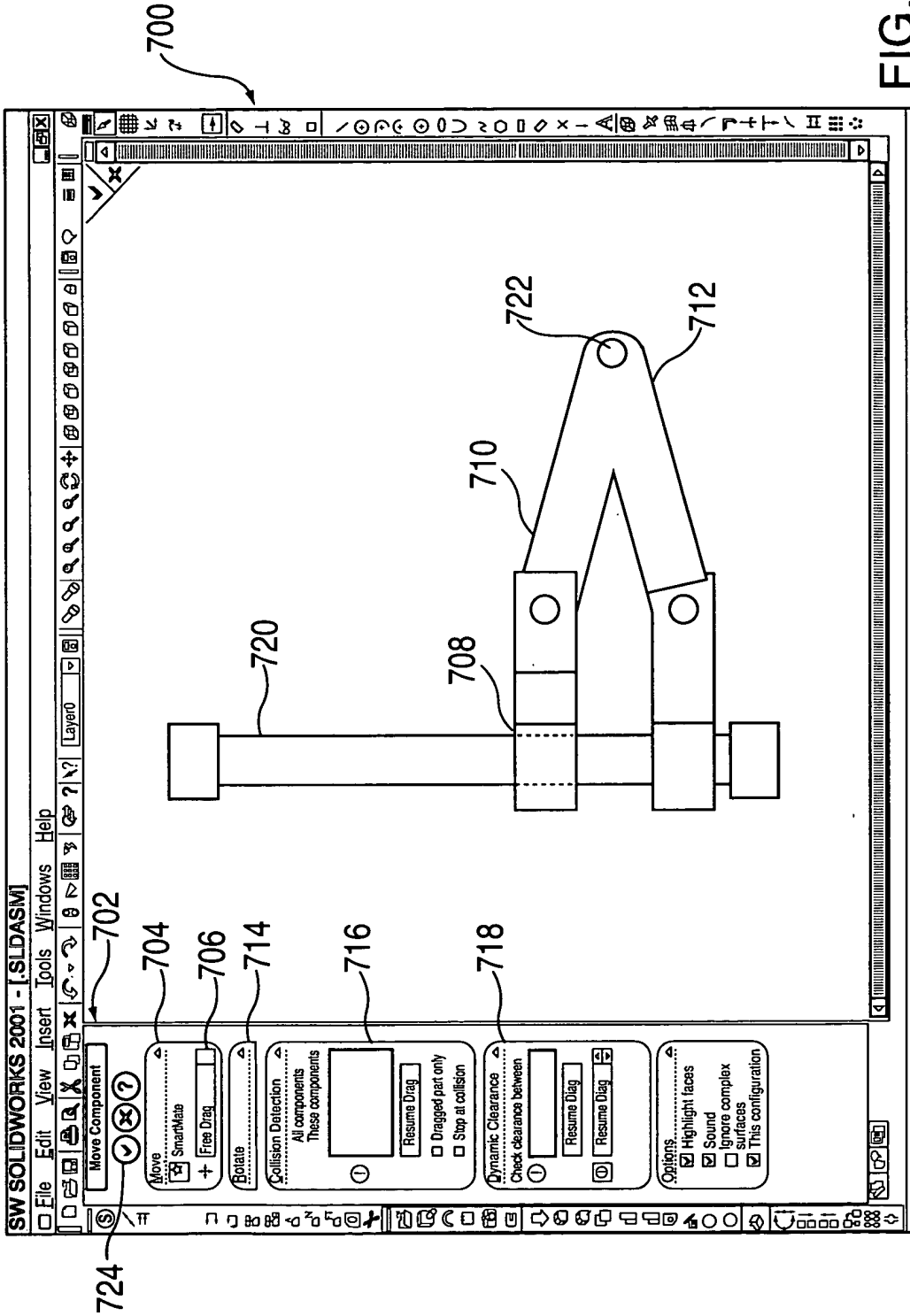


FIG. 7

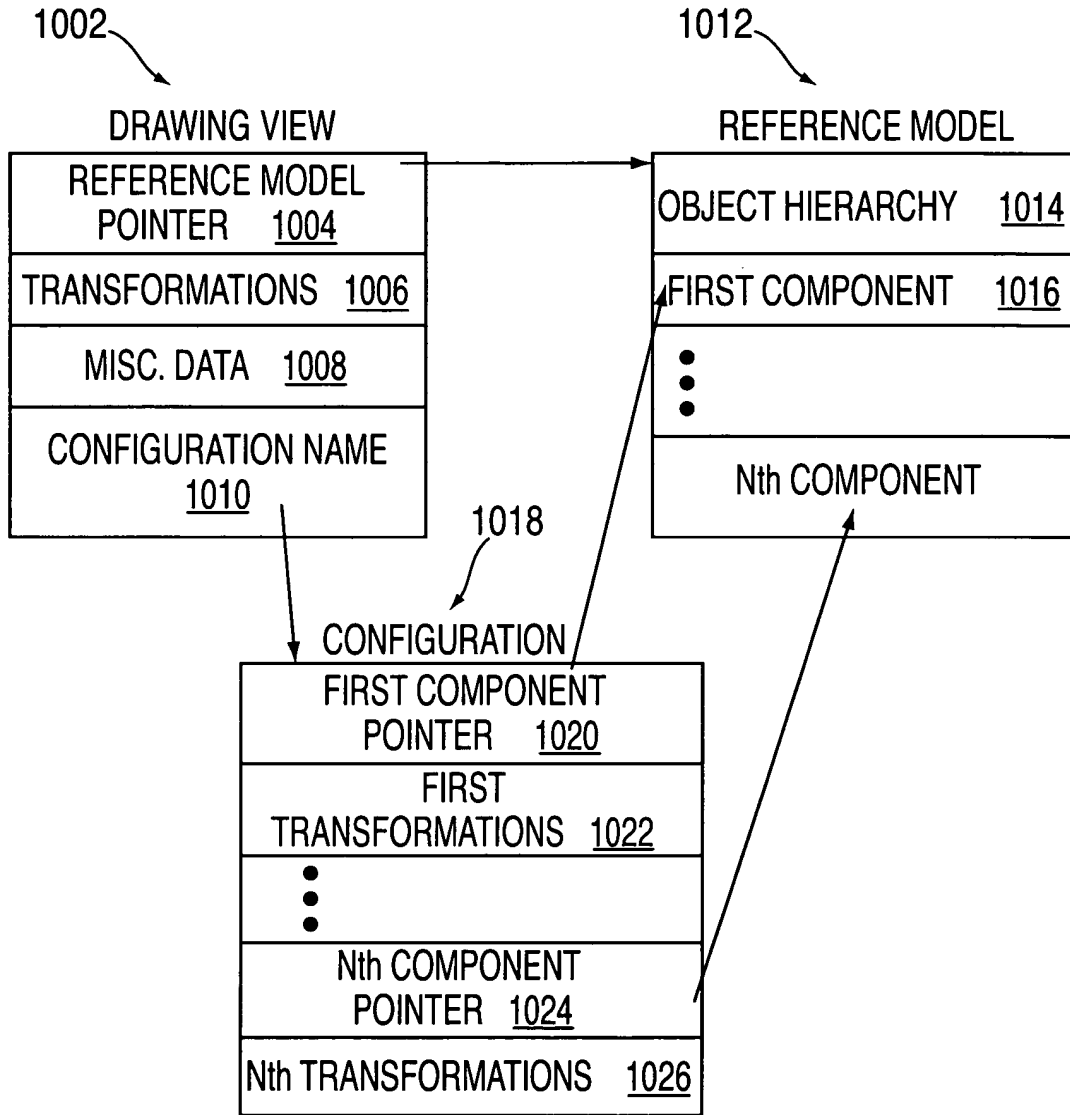


FIG. 10

USSN 09/924,294  
Replacement Sheet

12/15

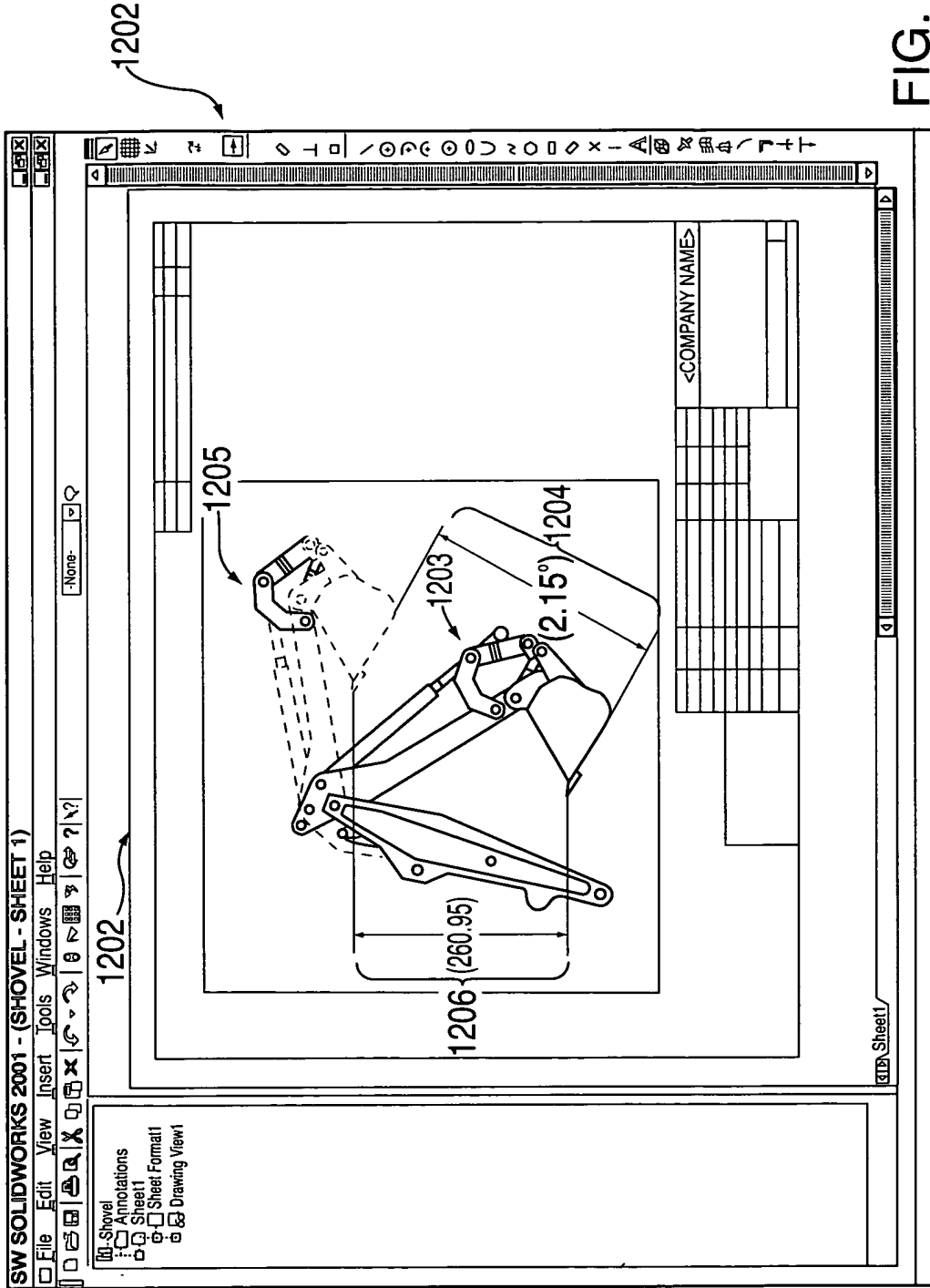


FIG. 12

USSN 09/924, 294  
Replacement Sheet

13/15

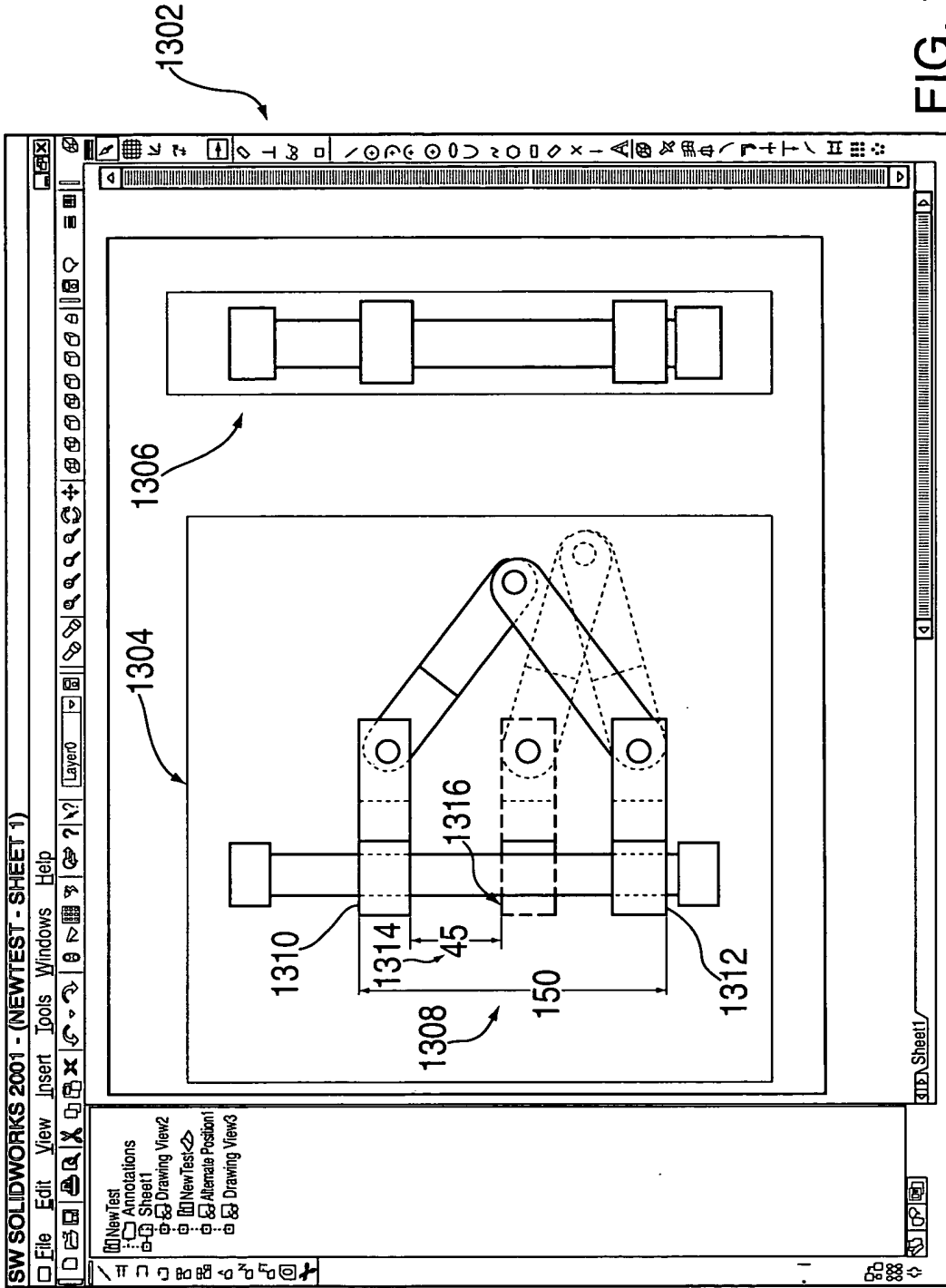


FIG. 13



US 2004/0192479 A1

Replacement Sheet

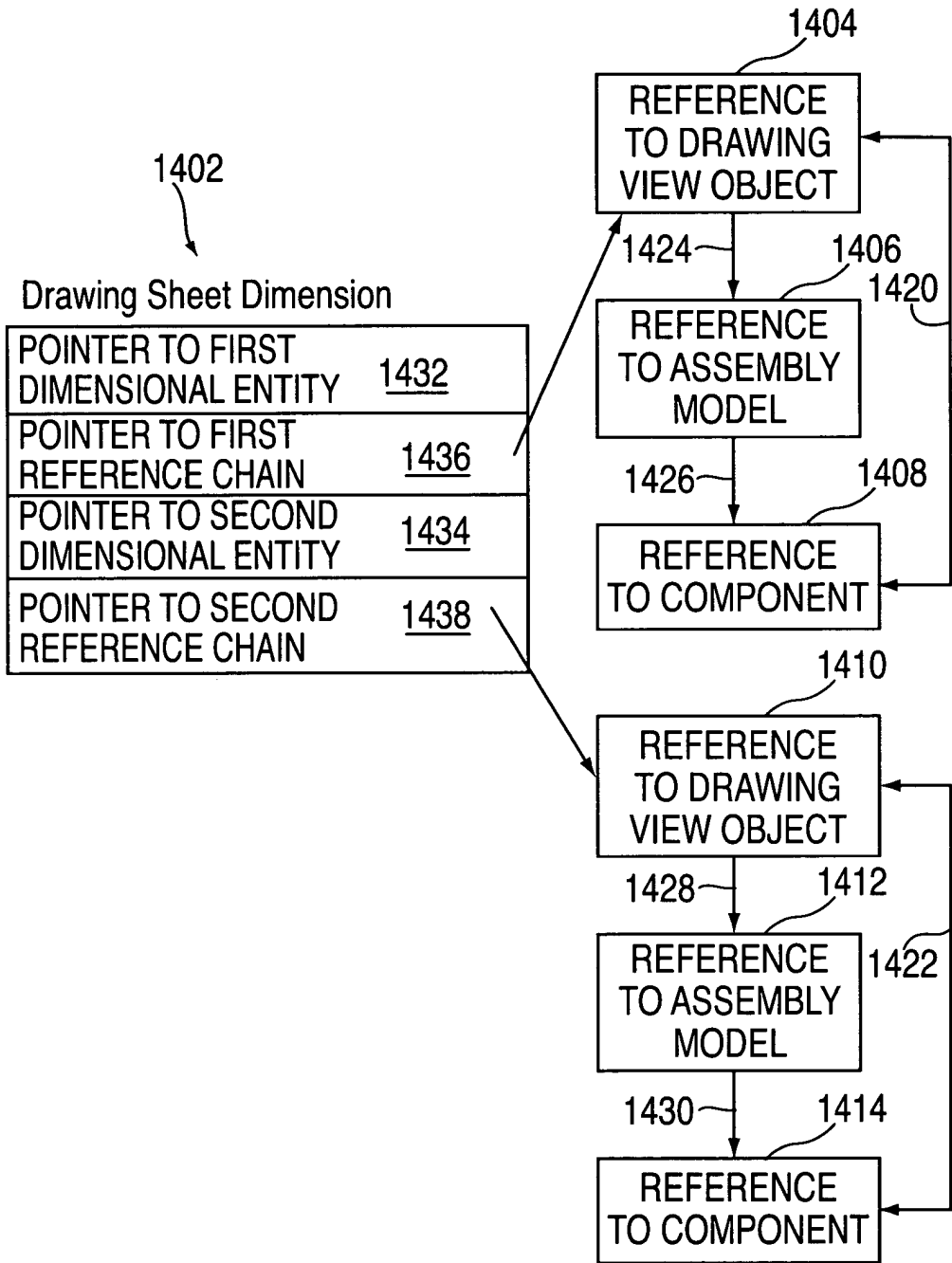
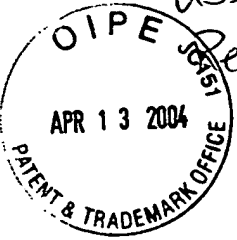


FIG. 14